

## How to change buttons on RollerMouse Red & Red plus:

First, make sure the mouse is unplugged from the computer.

Next step is to remove the wrist pad. If you have never taken the pad off before, a simple twist in this notch here with this tool that came with the mouse, or a flathead screwdriver if you no longer have that tool, and the pads should come right off.



| Contour Design Nordic A/S

| Borupvang 5B, st.tv.  
| 2750 Ballerup  
| Denmark

| Phone: +45 70 27 02 27

| [www.contourdesign.com](http://www.contourdesign.com)  
| [info@contour-design.com](mailto:info@contour-design.com)

These two middle screws need to come out from the underside.



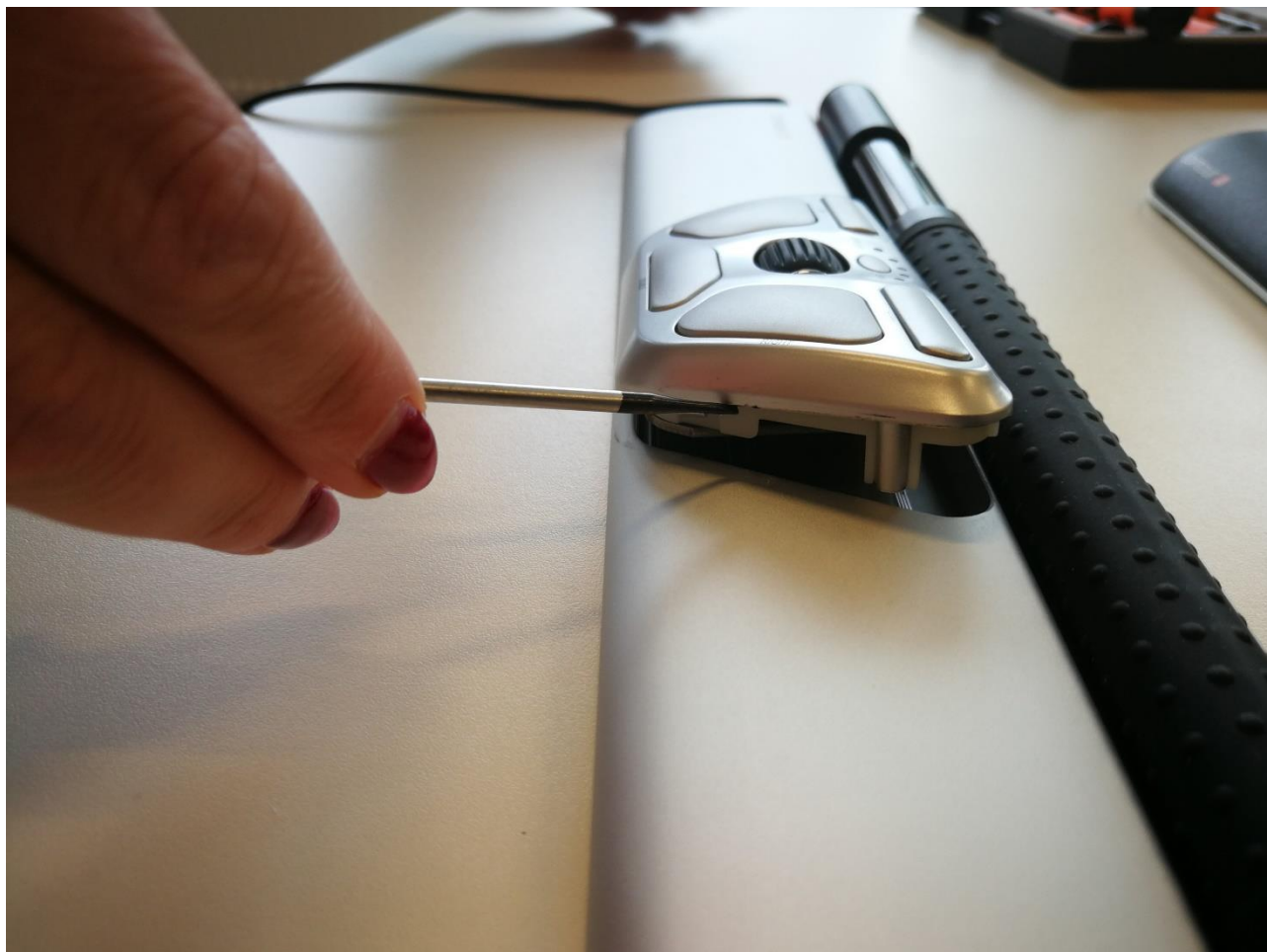
| Contour Design Nordic A/S

| Borupvang 5B, st.tv.  
| 2750 Ballerup  
| Denmark

| Phone: +45 70 27 02 27

| [www.contourdesign.com](http://www.contourdesign.com)  
| [info@contour-design.com](mailto:info@contour-design.com)

Flip over your RolleMouse, and the buttons can now be pried off using a small flat screwdriver. Lift up the button housing from right to left as there are 2 plugs on the left side.



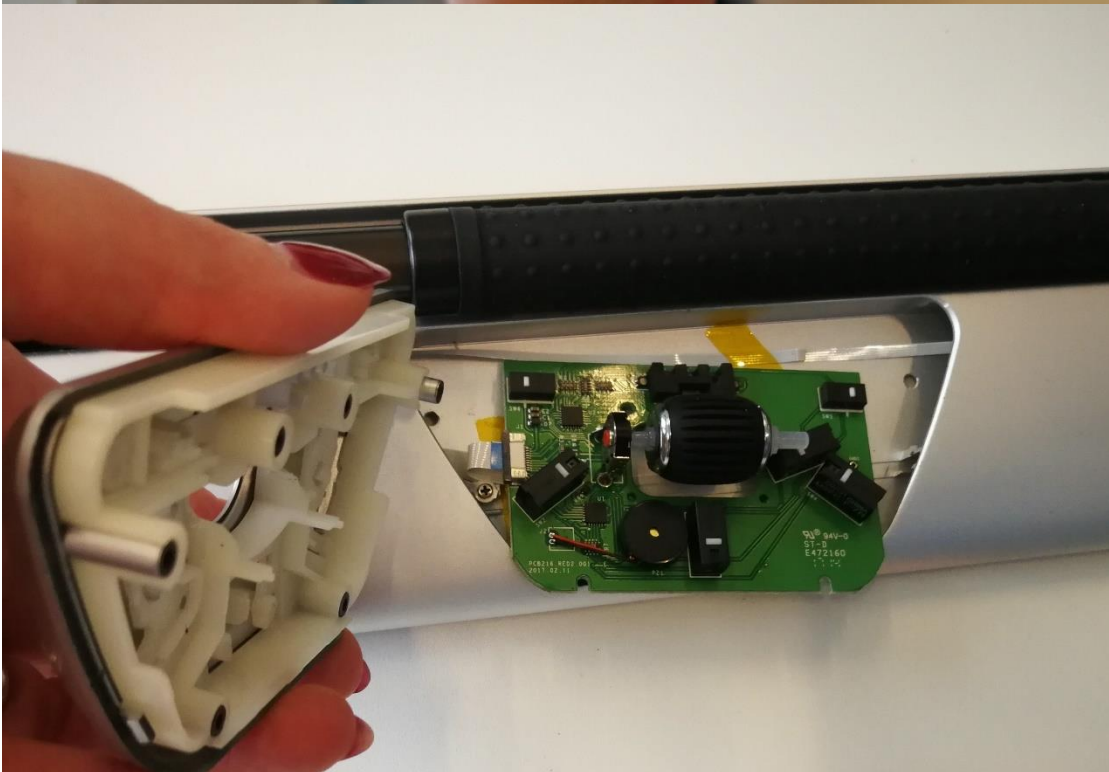
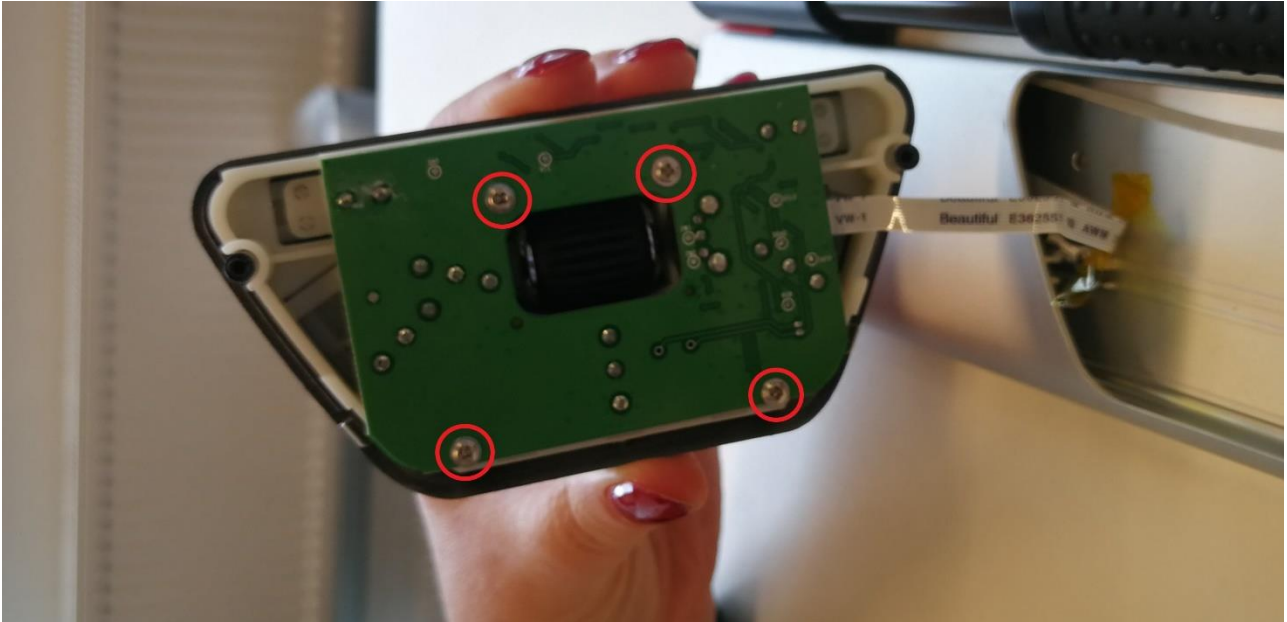
| Contour Design Nordic A/S

| Borupvang 5B, st.tv.  
| 2750 Ballerup  
| Denmark

| Phone: +45 70 27 02 27

| [www.contourdesign.com](http://www.contourdesign.com)  
| [info@contour-design.com](mailto:info@contour-design.com)

Unscrew these 4 screws to separate the board from the buttons.



| Contour Design Nordic A/S

| Borupvang 5B, st.tv.  
| 2750 Ballerup  
| Denmark

| Phone: +45 70 27 02 27

| [www.contourdesign.com](http://www.contourdesign.com)  
| [info@contour-design.com](mailto:info@contour-design.com)

Now replace the old buttons with the new, using the same screws as pictured above.

Lastly, make sure the wires are still connected, screw the board back on, making sure it is nice and tight to reduce excess play with the buttons, snap the buttons back in place, and replace the screws on the back.



You can now re-plug the USB into the computer and continue using your RollerMouse.

Best regards / Med venlig hilsen / Med vänlig hälsning / Med vennlig hilsen

Customer Service

Contour Design Nordic A/S  
Borupvang 5B st.tv  
2750 Ballerup  
Denmark

| Contour Design Nordic A/S

| Borupvang 5B, st.tv.  
| 2750 Ballerup  
| Denmark

| Phone: +45 70 27 02 27

| [www.contourdesign.com](http://www.contourdesign.com)  
| [info@contour-design.com](mailto:info@contour-design.com)